



BUGLE



Published by
RIPPLE ROCK GEM & MINERAL CLUB
Box 6, Campbell River, BC V9W 4Z9

Editor: Steve Cooley

March 2019
Regular monthly meeting
2nd Friday each month at 7:30 pm
(except July & August)
Craft Room, Campbell River Community Hall
401-11th Ave
Campbell River, BC



RIPPLE ROCK GEM & MINERAL CLUB

RIPPLE ROCK EXECUTIVE 2019

President	Linda Henderson	250-286-1718
Vice-President		
Past President	Kathy Young	250-285-3343
Secretary	Steve Cooley	250-287-4388
Treasurer	Dennis Cambrey	250-337-8949
Wagonmaster	Shane Mawhinney	250-285-3465
Assistant Wagonmaster(s)	Ron McBurnie Linda Henderson	250-285-2377 250 286-1718
Show Chair	Pat Doyle	250-285-2377
Shop Coordinator	Molly Milroy, Doug Screeton	250-830-7643
Entertainment	Rotate amongst club members	
Publicity	Diane Cooper, Beba Adams	250-830-0889
Bugle Editor	Steve Cooley	250-287-4388
Non-Executive Positions		
Showcases		
Slab Draw/Collection		
Coffee Break		
Webmaster	Melissa Ticknor, Linda Henderson	

Delegates to Vancouver Island Zone Meetings

Senior	Melissa Ticknor
Intermediate	Sunday Cousins
Junior	

WORKSHOP

Shop located at 246 Dahl Rd. (the better address is 247 Dahl Rd.)

For general shop info contact
Molly Milroy 250-830-7643

MEMBERSHIPS

A single membership is \$15.00 and a family is \$25.00. Memberships may be paid at the *General* meetings, or by mail to the address on the Bugle cover.

If anyone has problems with the big slab saw shutting down please call Dennis Cambrey when **it happens**. He will likely be able to come down and fix it but he needs to see it when it has turned off and won't go back on. . 250-287-7716

Thanks to all shop openers. If you are interested in learning what must be done to open the shop please let me know.

Molly Milroy

Ripple Rock Executive meeting February 6, 2019

Linda, Molly, Dennis, Steve, Beba, Pat, Diane

Membership renewal received by mail from Ryan and Lin Mulligan

Show Report – first batch of applications for vendors sent to last year's vendors sent. Next batch to follow soon.

Food – Linda will inquire with the Community Centre administration to find out if they will operate their kitchen Saturday and Sunday during our show. If they are not, can we contract to a group to operate it during our show? We assume that whoever operates it will take home all the kitchen proceeds for the weekend.

Pat was encouraged to find a few helpers to assist with the planning details.

We will use the Community Centre's show cases to advertise the show. We will fill all of them in March. During April and May, Isle Rock and Gem and Mystic Creations will fill one each.

(Not discussed this month, but we will rent their PA system this year)

The billboard at Orange Point Road has been removed by the logging crew. We have a 4x8 sign looking for a home.

Shop report – Molly made and oral report and will email it tomorrow. Water is frozen. Beba thawed it once, but we expect it freeze again. Exhaust fan installed. Slab saw not used since it was installed. Steve modified the flat polisher into a circular flat lap. Steve used it at his house to prove it worked and posted instructions with the extra sandpapers when he returned it to the shop. 10" trim saw blade worn out and will be replaced.

Elder College lapidary course cancelled because only one person signed up. Club courses will be done on demand.

Website still under construction, but close to being operational. Thank you to Linda's daughter.

Pat will demonstrate wire wrapping cabs at the February meeting.

Regular Meeting February 8, 2019

Attendance 13, 2 more walked in and bought a family membership

Molly chaired the meeting (Linda, Beba & Bonnie at a craft fair in Parksville)

Molly gave an oral report in her role as shop foreman and emailed it to the March Bugle. Cold weather froze the water, exhaust fan installed to duct oil mist out the window, rotary flat lap made from the rotary leather polish wheel, new blade needed for 10" trim saw.

Molly gave an oral report on the Wednesday's executive meeting (written report in March's Bugle). Plans are being made for our show, including the kitchen for coffee and snacks.

Show – tumble stones are needed for the 'grab bags' and club tailors are asked to sew simple bags of about 4"x5" to use the give the stones away. There is a box of obsidian shards in the shop that can be cut into suitable sizes to tumble.

Wagonmaster – Fraser River bar trip planned for March 16, 17 & 18. Shane bought a high intensity flashlight on line that makes Jade glow. Almost every rock at the meeting was checked to see if it could glow. Texada Island trip being planned for the summer time.

Publicity – We will use the show cases in the Community Centre from March 14th to June 14th. Isle Rock and Gem and Mystic Creations will put displays in during April and May.

Question was asked about ball caps with the club logo embroidered on them.

Question was asked if we have given the local rock shops club brochures. (hint to replenish their stocks!)

Adjourned at 7:55

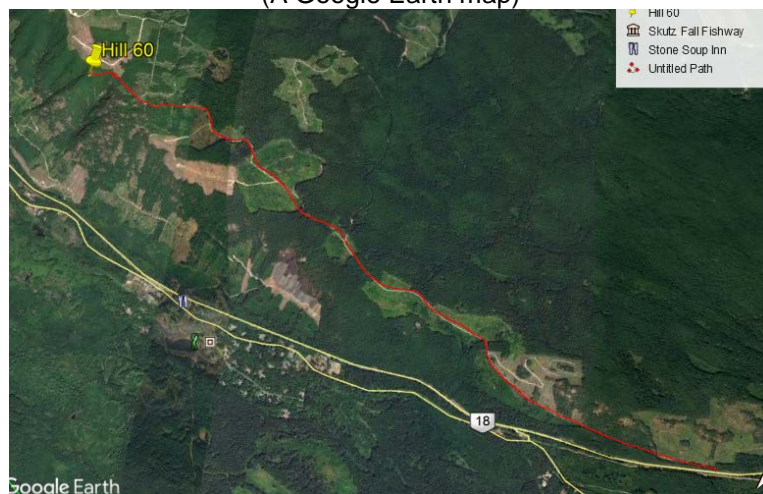
Slab draw was held and the new junior member went home with a hand full of slabs. We need slabs each month to populate the slab draw. Check your rock and slab stocks at home and use the slab draw to cull your stocks!

Rhodonite

Hill 60 Cowichan Valley Rockhounds field trip April 20th
Contact – John Sametz jwsametz@gmail.com



8 miles to the Highway, 8 miles to Lake Cowichan, 5 miles up the mountain
(A Google Earth map)



Hill 60

Traveling between Lake Cowichan and Duncan many of us are aware of Hill 60 , a distinct landmark where a manganese mine was once situated.

How did Hill 60 get its name?

One might well ask. In 1914 and 1915, during World War I, Canadian soldiers in Belgium distinguished themselves in the Battles of Ypress, part of Flanders Field, despite heavy casualties. One particular noteworthy engagement was the taking and holding of Hill 60. Cowichan residents were so proud of the bravery and achievement of the Canadians that they named the local mountain Hill 60.

In 1917 the government of Canada Munitions Board declared a little known mineral, manganese, of strategic importance in the making of munitions and steel. It was the following year, in the summer of 1918, that Merlin Douglas and Thomas Service discovered manganese deposits on the 2,000 foot level on Hill 60. With C.H. Dickie and T.A. Wood as partners, they acquired a lease from the C.P.R. which had purchased the E & N Railway in 1905 and formed the B.C. Manganese Co. Three claims were staked on Hill 60 which became productive.

A four mile wagon road was built from the mine to an ore bunker at Charter Siding, the federal government paying half the cost. The campsite was established with a cookhouse and bunkhouse for the workers. The first shipment from the open pit mine was shipped to Bilrow Alloy Co. in Tacoma, Washington. It consisted of 530 ton of ore, averaging 5% manganese and 19% silica. During 1919 and 1920 a total of 1,117 tons of ore was shipped to Tacoma for the manufacture into ferro-manganese steel. There was a great demand, so much so that in the winter of 1919-20 an aerial tramway was built on the mountainside from the mine to the bunkers along the railway line below. However the flurry of activity didn't last long. Little interest was taken in any of the deposits when the post war depression hit and the demand for manganese dropped. According to the records of the B.C. Department of Mines no ore was shipped after 1920.

It wasn't until 1938 when the Crown granted claims of Hill 60, which had reverted to the Crown, were acquired by W.R. Wylie of Vancouver. A year later, in 1939, ten young men, trainees of the Dominion Provincial Mining Training Project cleaned out and extended trenches on the known veins and found several others which they explored by trenching and stripping. Since then there has been no further mining.

In 1954 none of the deposits was staked. Rock hounds discovered the abandoned open pit mine as a source for rhodonite, the pink rock prized as gem quality for jewelry and much in demand. Re-staked and mined by a private enterprise interested in rhodonite, the area was mined out but in adjacent claims the gem rock is still found.

Although its history was brief, Hill 60 remains a landmark.



40x30 Cabochons



